

The Jefferson Foundation annual report 2010-2011



Board of Directors 2010-11

Greg Drake, President
President
The Drake Group/Realty Professionals

Emily Robinson, President-Elect
President
FirstBank Arvada

Les Willson, Treasurer,
July 2010-Dec. 2010
Senior Vice President
Stifel, Nicolaus and Co.

George Kowach, Treasurer,
Jan. 2011-June 2011
Community Bank Manager
Mutual of Omaha Bank Golden

Susy Fischer, Secretary
President
Freeman Insurance West

Lori Hoffner, Past-President
President and Founder
Supporting CommUNIITY Inc.

Jason C. Astle
Associate Attorney
Wheeler Trigg O'Donnell, LLP

Cindy Ayde
Counselor, Deer Creek Middle School
Jeffco Public Schools

Michele Bishop
Community Volunteer

Melinda Delmonico
Chairman/President/CEO
Gibson Arnold & Associates, Inc.

Stan Dempsey
President
Colorado Petroleum Association

Keith Evans
Vice President, Marketing Sales and
Business Development
Kaiser Permanente Colorado

Hon. R. Brooke Jackson
Federal Court Judge
United States District Court for Colorado

Jeff Lamontagne
Co-Founder, Executive Director
Second Wind Fund, Inc.

Tori Merritts
Jeffco Community Volunteer

Dr. Cynthia Stevenson, Ex-Officio
Superintendent
Jeffco Public Schools

Dave Thomas, Ex-Officio
President, Jeffco Public Schools
Board of Education

Katie Tiernan, Ex-Officio
Executive Director
The Jefferson Foundation

Kristi Wimbish
Principal
KBW Graphic Design

The Jefferson Foundation annual report 2010-2011



Dear Supporters of The Jefferson Foundation,

Thank you for joining us tonight at the 26th annual Crystal Ball gala. Since its inception in 1983, the Foundation has provided more than

\$9 million in program support to schools and community organizations in Jefferson County. With over 86,000 students attending more than 150 schools, the need is great. I would like to provide a brief overview of the important work that happens year-round throughout our district as a result of your financial support of The Jefferson Foundation.

Your financial contributions support The Jefferson Foundation's work in:

Implementation of the **Lights On After School** program in Jeffco Public Schools, which in 2010-2011 provided after-school enrichment programming to more than 2,600 students at more than 26 schools, touching literally every part of the county. This partnership with Mile High United Way has provided more than \$1.2 million for after school funding since 2007.

Stewardship and management of more than **50 donor-advised funds and scholarships** that provide support to students and schools for a variety of purposes. Through its 501c3 status, the Foundation provides a vehicle for individuals and businesses to make tax deductible contributions that can directly impact areas of interest within the district.

Support of the district-wide fundraising initiative to save **Outdoor Lab**. The Foundation provided in-kind support to the Outdoor Lab Foundation and will contribute more than \$106,000 in funds to help retain an important educational experience for 6th graders across the district.

Support for the district's volunteer-run clothing program, **Serving Kids**. In the 2010-2011 school year, the program provided a week's worth of clothing, including coats and shoes, to nearly 1,200 students.

Sponsorship of the annual **My Teacher, My Hero and My Student, My Hero** events, which highlight exceptional teachers and students around the district.

Management of the **Salazar Literacy Initiative**, putting more than \$1 million into Jeffco literacy programs since 1999. Funded projects have reached more than 50,000 students, improving language and reading skills across the county.

Sponsorship of the **Values Awards**, an annual event that recognizes the top 5% of Jeffco Public Schools employees who best exemplify the district's values of Integrity, Teamwork, Valuing People and Exemplary Performance.

Financial support for **four district-wide art shows** that provide recognition and affirmation to 1,500 student artists from every one of Jeffco's schools.

And so much more.

The Foundation provided more than \$500,000 in program support in the 2010-2011 school year. None of it is possible without key partnerships with partnering organizations. Most important, however, are our partnerships with you: individual and corporate donors. Thank you for your ongoing support.

Sincerely,

Emily Robinson, President (2011-12)



Dear friends,

This fall, 6,000 five-year-olds walked into kindergarten classrooms in Jeffco Public Schools for their very first day of school. These children represent the Class of 2024.

Take a moment when you read that. I know I need to. We have begun educating the students who will be adults, headed to college and the workforce, in 13 short years. These are children who never knew a world without smartphones, who were born after Osama bin Laden became a household name, and who have lived nearly their entire lives in an American recession. What will the world look like when they graduate from high school? Will they be prepared for the challenges they will face? As a community, we have to ask: Can we give these children the education they will need to thrive in our rapidly-changing world?

Here at The Jefferson Foundation, we know that providing enriching programs to our students is one of the most important ways we can prepare them to be successful adults in the 21st Century. We are proud that in the 2010-2011 school year, we were able to provide more than \$500,000 in program support, serving literally every single school in Jeffco Public Schools.

Our work compliments that of Jeffco Public Schools, which in 2011 was ranked in the top five for large public school districts in the United States by *Education Week* magazine for its high graduation and student achievement rates. Jeffco succeeds annually despite having a growing free and reduced lunch population—in 2011-2012, one in three Jeffco students will be from a low-income family.

As you probably know, with cuts to our schools' budgets this year, the need for private investment in public education is greater today than it ever has been. Donations from corporate and individual donors like you, coupled with the tireless work of our dedicated volunteers and community and district partners, help us fulfill our mission of supporting Jeffco Public Schools in preparing all students for a successful future.

Again, thank you for your support. Together, we are ensuring that Jeffco remains strong and that all our graduates, like this year's kindergartners on their way to becoming the Class of 2024, are among the best and brightest in the country.

Sincerely,

Katie Tiernan

The Jefferson Foundation, as an independent 501c3 nonprofit organization, is governed by a board of volunteer directors. These community leaders set strategic direction for the Foundation, provide legal and fiduciary oversight, and ensure that the organization has resources adequate to meet its objectives. In 2010-2011, the Foundation benefited greatly from the expertise and dedicated service of its volunteer Board of Directors and three staff.



Staff

The Jefferson Foundation employs two full-time and one part-time staff:

Katie Tiernan

Executive Director

Anthony "Anton" Delgado

Director of Marketing

Cyndee Manaugh

Executive Assistant



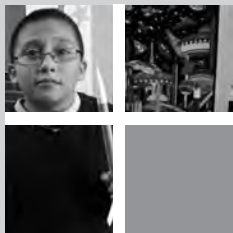
809 Quail Street, Building #1
Lakewood, CO 80215

303-982-2210 • www.jeffersonfoundation.org



Pictured (from left to right): Emily Robinson, Susy Fischer, Kristi Wimbish, Dr. Cindy Stevenson, Tori Merritts, Lori Hoffner, Keith Evans, Katie Tiernan, Cindy Ayde, Jason Astle, Dave Thomas, George Kowach.

Not Pictured: Michele Bishop, Melinda Delmonico, Stan Dempsey, Greg Drake, Hon. R. Brooke Jackson, Jeff Lamontagne, Les Willson.



The Jefferson Foundation annual report 2010-2011

Welcome to The Jefferson Foundation

The Jefferson Foundation has been affecting the lives of students and educators of Jeffco Public Schools for more than 28 years.

The Foundation was incorporated in 1983 as an independent 501c3 nonprofit organization by a group of citizens concerned with maintaining the high quality of Jeffco Public Schools. They were confronting society's changing expectations of public schools during a time of economic downturn in Colorado.

The founders believed that civic, cultural and business institutions in the community should play a role in the success of local schools. The Foundation's current mission, to support Jeffco Public Schools in preparing all students for a successful future, aligns with the founders' vision. The Jefferson Foundation pursues financial support from and strategic partnerships with corporations, businesses, foundations, and individuals who value public education and who believe in private investment in public education.

Since its inception, including program funding in 2010-2011, the Foundation has provided more than \$9 million in program support to schools and community organizations in Jefferson County.

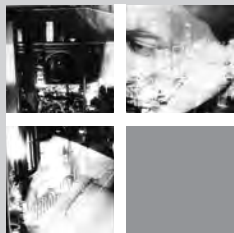
The Foundation looks forward to its fourth decade with a renewed focus of addressing the ever-changing and unmet needs of students district-wide and strengthening our Jeffco Public Schools community.



"This is an audacious, grandiose proposal. It envisions the creation of an educational foundation to be established in connection with Jefferson County School District R-1, for the express purpose of having a major impact on the quality of American education."

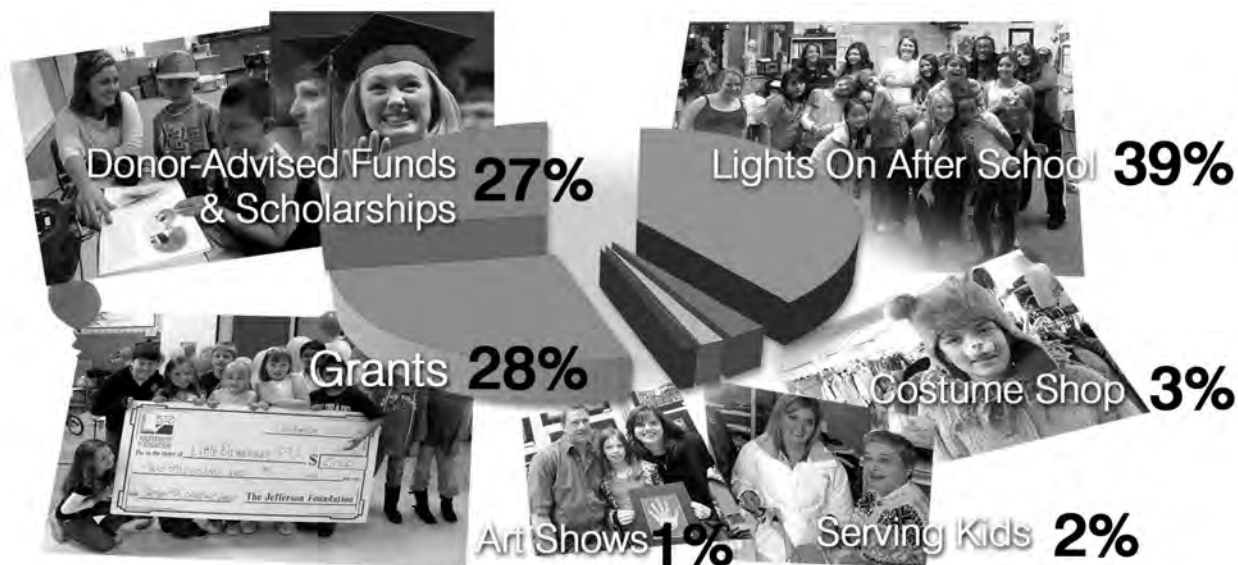
Kirk Brady, Jeffco School Board Member (1975-1994) and Founding Board Member of The Jefferson Foundation.





The Jefferson Foundation annual report 2010-2011

2010-2011 Total Program Expense



Schools and Community Organizations Benefited in 2010-2011

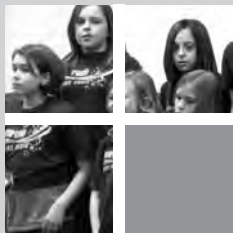
Adams Elementary School
Alameda High School
Allendale Elementary School
Arvada Elementary School
Arvada K-8
Arvada West High School
Bear Creek High School
Bear Creek K-8
Bell Middle School
Belmar Elementary School
Bergen Meadow (K-2)
Bergen Valley (3-5)
Beth Eden Christian
Blue Heron Elementary School
Bradford Elementary PTA
Bradford Intermediate (4-6)
Bradford Primary School (K-3)
Brady Exploration School
Campbell Elementary School
Carmody Middle School
Chatfield High School
Christian Youth Theater
Coal Creek Canyon K-8
Collegiate Academy of Colorado
Coloradans for Responsible Reform
Colorado Academy
Colorado Acts
Colorado School Foundations Association
Colorow Elementary School
Columbine High School
Columbine Hills Elementary School
Compass Montessori—Golden
Compass Montessori—Wheat Ridge
Conifer High School
Connections Learning Center
Coronado Elementary School
Creighton Middle School
CSU Extension 4H Horseshow
Dakota Ridge High School
Deane Elementary School
Deer Creek Elementary School

Dennison Elementary School
Developmental Disabilities Resource Center
D'Evelyn Junior/Senior High School
Deviny Elementary School
Drake Middle School
Dunstan Middle School
Dutch Creek Elementary School
Edgewater Elementary School
Eiber Elementary School
Elk Creek Elementary School
Evergreen Children's Chorale
Evergreen High School
Evergreen Middle School
Everitt Middle School
Excel Academy
Fairmount Elementary School
Falcon Bluffs Middle School
Fitzmorris Elementary School
Fletcher Miller Special
Foothills Elementary School
Foster Elementary School
Foster Elementary School PTA
Free Horizon Montessori
Fremont Elementary School
Front Range Christian Church
Glennon Heights Elementary School
Gold Crown Foundation
Golden High School
Good News Coalition
Gotta Dance, Gotta Sing
Governor's Ranch Elementary School
Green Gables Elementary School
Green Mountain Elementary School
Green Mountain High School
Grenoble School
Hackberry Hill Elementary School
Halstrom Options
Homeless Services
Hutchinson Elementary School
Indian Education Program
Jeffco PTA

Jeffco Public Schools (Department of Learning and Educational Achievement)
Jeffco Public Schools (Other)
Jeffco Public Schools Employee Recognition Program
Jeffco Transition Services
Jeffco's 21st Century Virtual Academy
Jefferson Academy Elementary
Jefferson Academy Secondary
Jefferson County Human Services
Jefferson County Open Primary School
Jefferson County Open Secondary School
Jefferson High School
Ken-Caryl Middle School
Kendallvue Elementary School
Kendrick Lakes Elementary School
Kullerstrand Elementary School
Kyffin Elementary School
Lakewood High School
Lasley Elementary School
Lawrence Elementary School
Leawood Elementary School
Lincoln Academy
Little Elementary School
Long View High School
Lukas Elementary School
Lumberg Elementary School
Mandalay Middle School
Manning School
Maple Grove Elementary School
Marshdale Elementary School
Martensen Elementary School
Martensen PTA
McLain Community School
Melkjohn Elementary School
Miner's Alley Playhouse
Mitchell Elementary School
Molholm Elementary School
Montessori Peaks Academy
Moore Middle School
Mortensen Elementary School

Mount Carbon Elementary School
Mount Evans Outdoor Education Laboratory School
Normandy Elementary School
North Arvada Middle School
Oberon Middle School
O'Connell Middle School
Our Lady of Fatima
Parmalee Elementary School
Parr Elementary School
Patterson International Elementary School
Peck Elementary School
Peiffer Elementary School
Pennington Elementary School
Pleasant Valley Elementary School
Pomona High School
Powderhorn Elementary School
Prelude of Evergreen
Prospect Valley Elementary School
Ralston Elementary School
Ralston Valley High School
ReConnect Program
Red Rocks Community College
Red Rocks Elementary School
Rocky Mountain Academy of Evergreen
Rocky Mountain Deaf School
Rooney Ranch Elementary School
Ryan Elementary School
Schaffer Elementary School
Second Wind Fund, Inc.
Secrest Elementary School
Semper Elementary School
Shelton Elementary School
Sheridan Green Elementary School
Sierra Elementary School
Slater Elementary School
Sobesky Academy
South Lakewood Elementary School
Spellbinders Jeffco
Stage Door Lutheran
Standley Lake High School

Stein Elementary School
Stevens Elementary School
Stober Elementary School
Stony Creek Elementary School
Stott Elementary School
Summit Ridge Middle School
Swanson Elementary School
The Arvada Center for the Arts and Humanities
The Colorado Children's Campaign
The West Chamber Serving Jefferson County Foundation
Thomson Elementary School
Trailblazer Elementary School
Two Roads High School
Ute Meadows Elementary School
Van Arsdale Elementary School
Vanderhoof Elementary School
Vivian Elementary School
Warder Elementary School
Warren Tech
Warren Tech North
Wayne Carle Middle School
Weber Elementary School
Welch Elementary School
Welch Elementary School
West Jefferson Elementary School
West Jefferson Middle School
West Woods Elementary School
Westgate Elementary School
Westridge Elementary School
Wheat Ridge High School
Wheat Ridge Middle School
Wilmore-Davis Elementary School
Wilmot Elementary School
Windy Peak Outdoor Education Laboratory School
Witt Elementary School
Woodrow Wilson Academy
Young American Center for Financial Education
Zerger Elementary School



The Jefferson Foundation annual report 2010-2011

Lights On After School

The after-school hours are often the most dangerous for students. It's during unsupervised afternoons when children experiment with behaviors that put them at risk of dropping out of school, becoming involved in the criminal justice system, becoming teen parents and being victimized by crime.

However, after-school hours can also be a tremendous asset to enhance the learning that takes place during the school day, for involving students in their community and for reaffirming the kinds of choices and activities that create positive opportunities for students.

To help schools capitalize on the opportunity that after school time provides, The Jefferson Foundation has teamed with Mile High United Way and Jeffco Public Schools to provide Lights On After School (LOAS) in Jeffco Public Schools. In 2010-2011, the program received additional funds from Lockheed Martin, the Salazar Family Foundation and Schomp Automotive.

LOAS is based on research of successful out-of-school-time programs studied and supported by the national Afterschool Alliance. The Jeffco program's goal is to promote on-time graduations by improving student attendance and academic performance, reducing behavioral problems, and helping students feel more connected to and engaged with their school communities. The program is thus perfectly aligned with The Jefferson Foundation's strategic

goals of reducing achievement gaps and increasing graduation rates.

LOAS was originally launched in the 2007-2008 school year with start-up funding from the Salazar Family Foundation and Mile High United Way. In 2010-2011, the program expanded to serve 26 schools and programs, an increase of 60% from the prior school year. About 2,600 students participated in programs around the district, more than double the number served in 2009-2010. For the first time, funded sites in the 2010-2011 school year worked with community partner organizations, including Foothills Parks and Recreation District, the Arvada Center for the Arts and Humanities, Cleo Parker Robinson Dance, Positive SPIN Foundation, Girls on the Run and more to provide higher-quality programs and develop sustaining resources.

Funded sites were awarded grants through a competitive application process. The applications were



Lights On After School



The Jefferson Foundation annual report 2010-2011



reviewed by a team of community volunteers, who made recommendations for funding. Projects were funded at:

Allendale Elementary School
Arvada High School
Bear Creek K-8
Betty Adams Elementary School
Columbine Hills Elementary School
Compass Montessori —
Wheat Ridge and Golden
Connections Learning Center
Creighton Middle School
Dakota Ridge High School
Edgewater Elementary School
Golden High School
Jefferson High School
Kendrick Lakes Elementary School
Lawrence Elementary School
Lumberg Elementary School
Pennington Elementary School
Rocky Mountain Deaf School
Secrest Elementary School
Stevens Elementary School
Thomson Elementary School
Vivian Elementary School
Wheat Ridge High School
Wheat Ridge Middle School
Zerger Elementary School

The program also funded three district-wide programs providing after school programming across several articulation areas:

Mariachi Niños
Mariachi Juvenil
Indian Education

Preliminary evaluations of the program have uncovered that students who participated in Lights On After School programs feel safer at school, feel they have a positive relationship with at least one adult role model in their school, attend day school more regularly, participate in class more often and are improving their grades and academic performance, solve interpersonal problems without fighting or bullying, and feel that the teachers in their schools care about them.

Most significantly, students who self-identified as racial or ethnic minorities reported more positive impressions of the program than did their white peers, an early indicator that program flexibility in each school is ensuring that traditionally underserved students are not left out.





The Jefferson Foundation annual report 2010-2011

The Costume Shop

School theater departments are used to making do with donations and “creative” repurposing of props and costumes. In Jeffco Public Schools, however, every school theater department has access to a 3,000 square foot warehouse of costumes. The Costume Shop, a program of The Jefferson Foundation supported by the work of long-time shop manager and Foundation volunteer Jane Gilmore, provides thousands of costumes and props to schools and community groups all over Jefferson County.

The Costume Shop has been a free resource for the students of Jeffco Public Schools since it opened in the 1970s. Previously a funded performing arts program in Jeffco Public Schools, the shop was eliminated from the District’s budget for 2010-2011 as funding cuts hit every aspect of education. The Jefferson Foundation committed to funding the program and works with donors and theater departments around the district to fundraise the program’s operating budget each year.

The program remains free to Jeffco students. The costumes and props are available to community members, local theater

organizations and private schools, though a donation is suggested for these “loans.”

The resource is a popular one. In the 2010-2011 school year, the Costume Shop provided:

- Costumes and props to more than 1,200 individuals, including 1,100 students and staff from Jeffco Public Schools
- 1,176 costume items to community groups, including the Evergreen Children’s Chorale, Red Rocks Community College, Colorado Acts, Stagedoor Theater and more

Location: The Costume Shop is located on the west side of Building No. 1 at 809 Quail Street, Lakewood.

Phone: 303-982-2292

Hours: Monday and Thursday, 1 p.m. to 5 p.m., during the regular school year.

Make a donation: Visit www.jeffersonfoundation.org to learn how to donate to the Costume Shop.

Supported productions in Jeffco schools included *Going Buggy*, *Annie*, *Aladdin*, *Chicago*, *Music Man*, *Sound of Music*, *My Fair Lady*, *Guys and Dolls*, *Hello Dolly!* and more.



The Jefferson Foundation annual report 2010-2011

Jeffco Public Schools Art Shows

Jeffco Public Schools is a pioneer in arts education programming, and one of the most key components of this important academic enrichment activity is the emphasis on publicly recognizing student artists. A district-wide art show has provided professional gallery experience and community exposure to budding artists in Jeffco Public Schools since the 1970s, when the first Jeffco High School Art Show opened to critical acclaim. More than 40 years later, students in Jeffco Public Schools are rewarded for their hard work in the arts in the district-wide K-12 Equity and Excellence Show, the Elementary School Art Show, the Middle School Art Show and the venerable High School Art Show.

Long-time arts supporters will note that the shows are no longer supported financially by Jeffco Public Schools. Funds for substitute teachers to allow art instructors to hang and judge the shows and funds for other show costs, such as refreshments and prizes, were eliminated entirely in the school district's 2010-2011 budget.

The Jefferson Foundation, backed by the Betty and Joe Wetherbee Art and Music Fund, has committed to providing all necessary funding to keep the shows free and open to the public.

In 2010-2011, the art shows featured nearly 2,000 works of art across a variety of media from more than 1,200 students. While no formal evaluation of the program is yet in place, art instructors have anecdotal evidence that participation in the shows promotes work ethic, positive behavior and self-efficacy among students. In addition, exceptional student artists featured at the High School Art Show are eligible for tens of thousands of dollars in college scholarships and awards handed out by higher education institutions and individual supporters at the high school show.



The Jeffco Public Schools Art Shows are funded by The Jefferson Foundation with significant support from the Betty and Joe Wetherbee Art and Music Fund, an endowed fund held at the Community First Foundation for the benefit of The Jefferson Foundation's art and performing arts programs. Joe Wetherbee was one of the founders of the High School Art Show and helped create a fine art program at Wheat Ridge High School during his 30-year teaching career. His widow, Betty, remains dedicated to excellent arts programming in Jeffco Public Schools and the work of The Jefferson Foundation.





The Jefferson Foundation annual report 2010-2011

Serving Kids Clothing Program

Staffed entirely by volunteers and supported with publicity, financial management and oversight by The Jefferson Foundation, the Jefferson County Administrators Association (JCAA), the Jefferson County Education Association (JCEA), the Classified School Employees Association (CSEA) and the Jeffco Council of PTA, the Serving Kids program provides a week's worth of clean, appropriate clothing to any student in Jeffco who needs it.

Founded by school employees in 1996, Serving Kids collects donated clothing and fundraises to buy new shoes and underwear for Jeffco's neediest children. Jeffco school staff requests clothing for students in need by emailing or faxing an "order" to a team of volunteers based at the program's storage site. Typical clothing orders

Clothing donations for Serving Kids may be dropped off at The Jefferson Foundation (809 Quail St., Bldg. #1, Lakewood, CO 80215) Mondays through Fridays from 9 a.m. to 5 p.m.

Cash donations are also needed to purchase new underwear and shoes for students.

Visit www.jeffersonfoundation.org to learn more about how to make a donation to the program.

include three pairs of pants, five shirts, underwear and socks, a coat and hat, gloves, new shoes and usually a sweater or sweatshirt. "Filled" orders are then delivered to school staff and are given to students in the privacy of the school, eliminating travel obstacles for families already stretched to the limit.

The total cost for this important service? A mere \$6.18 per student.

The program is supported with clothing drives and donations from around the community. Notable partners in the 2010-2011 school year included Southwest Plaza, which donated a storefront to serve as a collection point for donated clothing; dozens of Jeffco schools, which held clothing drives year-round; and even the Messy Rooms Foundation, which was founded by two students in the Five Parks neighborhood of Arvada to collect

children's clothing for the Serving Kids program.

"Response to the program's mission is tremendous," said Katie Tiernan, executive director of The Jefferson Foundation. "We have people cleaning out their kids' closets and bringing in bags of clean clothing, mailing checks to buy shoes, and braving back-to-school sales, all for children they will never meet."

In 2010-2011, the program provided clothing to children from a variety of backgrounds and with diverse stories: children whose families couldn't afford new clothes after a growth spurt, who had lost everything in house fires, who were homeless, and more. Over the course of the year, the program served more than 13,000 articles of clothing to nearly 1,100 students from every neighborhood in Jefferson County.





The Jefferson Foundation annual report 2010-2011

Mobile Science Show

The Jefferson Foundation took on a new program at the end of the 2010-2011 year: the Mobile Science Show (MSS). Launching as a formal Jefferson Foundation program in August 2011, the MSS has a rich 20-year history of bringing hands-on science education to students around Colorado.

Bear Creek High School chemistry teacher Sue Anne Berger created the MSS in partnership with the Colorado School of Mines in 1991 after receiving the national Presidential Award for Excellence in Science Teaching. Formerly a program of the Colorado School of Mines, MSS is designed to enrich science education in grades K-8 through science shows at schools, summer teacher workshops, and providing materials and lesson plans for teachers to take back to their classrooms.

The MSS has a three-pronged approach to science enrichment. First, the MSS program staff pile themselves and their equipment and materials into the bright blue Mobile Science Show van and visit interested schools to present Student Science Shows. Student Science Shows are age-appropriate, assembly-style science demonstrations. The shows are interactive, use scientific terminology, and emphasize the scientific method to help students understand and develop an interest in science. According to students who have participated, the shows are also very, very fun.

While the student shows may be the most memorable aspect for students, teachers at participating schools reap the benefits of the program, as well. Teachers are provided one-on-one mentorship from MSS instructors after the science show to help them integrate the hands-on lessons into their daily science curricula.

The third prong of the MSS program takes place during the summer months. Elementary and middle school science teachers from around the metro area attend a five-day Teacher Summer Workshop tailored to their students' ages and learning levels at WarrenTech North, a Jeffco Public Schools secondary trade school.

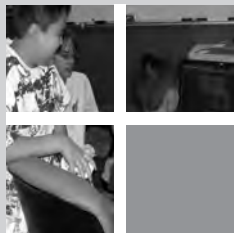


During the Teacher Workshops, elementary and middle school teachers learn effective ways to integrate science into everyday instruction and participate in hands-on physical science demonstrations. Participants go home with a resource manual filled with more than 200 pages of lesson plans and classroom resources and contact information for classroom science resource providers.

Perhaps most valuable to teachers, the MSS provides each teacher who participates in the Teacher Summer Workshop with KITS (Kids Introduced to Science) packages to take back for use in their schools. KITS complement the resource manual and include all the materials needed to replicate experiments in the classrooms.

The program serves an estimated 1,500 students with Student Science Shows annually. With approximately 30 teachers total participating in the Teacher Summer Workshops, and then developing skills among one to two additional teachers back at each school, approximately 2,800 additional students benefit each year from improved classroom science instruction.





The Jefferson Foundation annual report 2010-2011

Jefferson Foundation Grants



The Jefferson Foundation awards competitive grants for innovative programs through its General Program grantmaking and its Salazar Literacy Initiative.

One of the longest-running activities of The Jefferson Foundation has been general grantmaking to support school-based programs and projects in Jeffco Public Schools. Through a proposal process, schools and community organizations apply for funds to help them launch or continue programs that address achievement gaps and help increase graduation rates.

The Foundation makes grants twice annually. With a deadline the last business day of August and April annually, the Foundation historically has made grants totaling anywhere from \$30,000 to \$100,000, depending on resources available.

The 2010—2011 school year was different, however. On March 11, 2011, Jeffco Public Schools announced more than \$39 million in cuts to schools in the 2011-2012 school year. This reduction was unprecedented in Jeffco's recent history and is having an impact on every single student, family and school in Jefferson County. Because of significant anticipated shortfalls in state and county K-12 education funding, the cuts are just the beginning of what will likely be three very difficult years of reductions in Jeffco Public Schools, with estimates of cuts totaling more than \$100 million by 2014.

Because the mission of The Jefferson Foundation is to support Jeffco Public Schools in preparing all students for a successful future, the Board of Directors and the staff of the Foundation will respond to these cuts with strategic purpose. As a result, the Board of Directors decided in March 2011 to temporarily suspend general program grantmaking and instead focus on facilitating local community support of Jeffco students through the Foundation's core programs and donor-advised funds and scholarships.

General grantmaking may return in the 2012-2013 school year, subject to approval by the Board of Directors.

Despite the change in general program grantmaking, another of the Foundation's grant opportunities remains available. The Salazar Literacy Initiative, a literacy-focused and competitive grant opportunity for Jeffco schools, once again provided funding to develop and sustain programs that seek to close reading and writing achievement gaps.

The Salazar Literacy Initiative is funded by the Salazar Family Foundation, a private family foundation launched by former Jeffco educator Lola Salazar and her husband, Rob. Lola and Rob believe strongly in using their personal wealth to better the communities from which they came, and direct donations from their family foundation to support literacy programming at The Jefferson Foundation, the DPS Foundation, and Escuela de Guadalupe, a private K-8 school in Denver.

Since 1999, the Salazar Family Foundation has provided more than \$1 million in funds for literacy programs around Jefferson County through The Jefferson Foundation.

With ongoing support from the Salazar Family Foundation, the Salazar Literacy Initiative will continue in the 2011-2010 school year and beyond.





The Jefferson Foundation annual report 2010-2011

Donor-Advised Funds and Scholarships

The Jefferson Foundation was founded to create fundraising flexibility for private dollars to be invested into public education. The Foundation's largest activities in terms of assets, donor-advised funds and scholarships, still support that founding vision.

Donor-advised funds and scholarships of The Jefferson Foundation are funds held for the benefit of specific schools, geographic areas, activities or issue areas. The funds and scholarships are founded and funded by individuals, businesses and civic organizations who want to offer the benefits of a 501c3 nonprofit status to donors but who do not want the hassle of obtaining and maintaining their own nonprofit organization.

Donors make a donation to The Jefferson Foundation and indicate into which fund they want their gift to go. The Foundation provides all fund accounting services for the fund, including acknowledging and receipting the donation for the donor, conducting actual banking, and using funds, when directed by the fund creator, to make grants, pay for program activities, or cover other expenses consistent with the fund's established purpose.

Donor-advised funds and scholarships held by the Foundation are governed by an agreement

entered into by the fund creator and the Foundation; the agreement usually stipulates a management fee to be transferred to the Foundation from the fund of less than 2% of the fund value annually to cover part of the cost the Foundation incurs by providing this service.

In 2010-2011, the Foundation opened four new donor-advised funds and scholarships:

The Save Outdoor Lab Schools Fund was established in partnership with the Outdoor Lab Foundation, an independent nonprofit dedicated to the Outdoor Education Laboratory Schools in Jeffco Public Schools. The Jefferson Foundation solicited and secured more than \$100,000 through its Outdoor Lab Fund, helping the Outdoor Lab Foundation reach its goal of \$900,000 in community and district support to keep the lab schools open in the 2011-2012 school year.

The Dee Reed Teaching Scholarship was opened in honor of Dee Reed, a Wheat Ridge High School graduate, by her adult children. The fund will provide a college scholarship to a Wheat Ridge High graduate who plans to become a teacher.

Ruthie's Fund is a professional development scholarship fund to help Jeffco teachers pay for the Colorado Writing Project summer workshops.

The Panorama Orthopedic and Spine Center Scholarship Fund was founded by Panorama Orthopedic and Spine Center in Jefferson County to provide two scholarships annually to one male and one female Jeffco Public Schools graduate who plans to pursue a career in health care.

Donor-Advised Funds

Math Kits Fund
Lights On After School
Karen Richardson Fund
Betty and Joe Wetherbee Art and Music Fund
Save Outdoor Lab Schools Fund
WarrenTech Foundation Fund
Read to Me Fun—Arvada
Read to Me Fund—Wheat Ridge
Serving Kids Fund
National School Board Association Conference Fund
Foster Elementary School Enrichment Fund
Lakewood High School Renaissance Fund
Standley Lake High School Renaissance Fund
Second Wind Fund
Dakota Ridge Senior High School Fund
Wayne Carle Diversity Fund
Devinny Elementary Adventures in Reading Fund
WarrenTech Auto Program Fund
Weber Rebuilding Fund
Sue Anne Berger Math and Science Fund
Homeless Services Fund
Salazar Literacy Fund
Larry Weiland Memorial Fund
Green Mountain Area Partnership Fund
DLEA Resource Center Fund
Diversity Fund
Count Me In Fund
Jefferson County Retired School Employees Association (JCRSEA) Books for Kids Fund
Art Brunig Memorial Fund
Alameda High School Renaissance Fund
Arvada Bulldog Commons Fund
DG Fund
Arvada Wheat Ridge Service Ambassadors for Youth (AWRSAY) Fund
Jeffco Art Shows
Jeffco Costume Shop
Mobile Science Show
Lakewood High School SLIC Fund
64th Avenue and Wheat Ridge Essay Contest Fund
Lucent At-Risk Students Fund
Colorado School Foundations Association Fund
Arvada K-8 GT Fund
Value Awards Fund
Green Mountain Elementary ASD Fund
Patterson Challenge Day Fund
Mariachi Juvenil y los Niños Fund

Scholarships

Lakewood High School Class of '51 Scholarship Fund
David Skaggs Scholarship Fund
Rich Kestenbaum Scholarship Fund
Ruthie's Fund Scholarship
Panorama Orthopedic and Spine Center Scholarship
Opportunity to Better Yourself (OPBY) Scholarship Fund
Jefferson County Retired School Employees Association (JCRSEA) Scholarship Fund
McKee-Tomlinson Scholarship
Dee Reed Teaching Scholarship
Christopher Faughnan Memorial Scholarship Fund
Carl A. Cerveny Scholarship Fund
Bailey Memorial Scholarship Fund
Sue Anne Berger Math and Science Scholarship Fund
Lillian LaFleur Scholarship Fund
Arvada High School Class of '78 Scholarship Fund
Arvada High School Alumni Scholarship Fund
Rebel Character Award Scholarship Fund





The Jefferson Foundation annual report 2010-2011

Strengthening the Jeffco Community



Sue Mogan

One of the most important roles The Jefferson Foundation plays is in strengthening the community of support around Jeffco Public Schools. By focusing on the exceptional people in the school district, the Foundation helps bring positive recognition for the work excellent teachers, administrators, classified staff and students all do in Jeffco schools every day.

Perhaps the most well-known of these community-strengthening activities are the My Teacher, My Hero and My Student, My Hero awards. Hosted in partnership with Southwest Plaza and the *Columbine Courier* newspaper, the awards started out with a focus on south and mountain schools in Jeffco. In 2010, the partnership decided to open the awards up to all of Jefferson County.



Susan Coveyduck

My Teacher, My Hero recognizes three teachers who display genuine commitment to their students and their profession, who demonstrate community involvement and who go above and beyond to reach every child. The 2010-2011 winning teachers, recognized in September 2010, were Sue Mogan of Hackberry Hill Elementary School, Susan Coveyduck of the Manning School, and Marsha Roman of Columbine High School.



Marsha Roman

My Student, My Hero recognizes eight students graduating from Jeffco Public Schools who have demonstrated tremendous community service, who show strength in the face of adversity, and who exemplify extraordinary student citizenship. The 2010-2011 winning students, recognized in March 2011, were Lyle Sisson of Arvada West High School, Courtney Gamble of Bear Creek High School, Cassandra Pearman of Brady Exploration School, Kaitlyn Smith of Conifer High School, Andrea Acker of Dakota Ridge High School, Haley Rowan of Evergreen High School, Jillian Conrad of Jeffco's 21st Century Virtual Academy, and Rachael Talley of Jefferson Academy Secondary School.

Additional award sponsors include Elite Sound, Jacqueline's Photography, Tokyo Joe's, Dick's Sporting Goods, Lola's Sugar Rush, BeauJo's Pizza, Villa Fresh Italian Kitchen and the Painted Platter.



Lyle Sisson



Andrea Acker



Haley Rowan



The Jefferson Foundation annual report 2010-2011

Lesser-known but larger in scope is the Jeffco Public Schools Value Awards, which The Jefferson Foundation helps to fund and plan. The 2010-2011 awards, held in April 2011, recognized more than 600 employees of Jeffco Public Schools who were nominated by their colleagues for exemplifying the district's employee four core values: Integrity, Valuing People, Teamwork and Exemplary Performance. Westerra Credit Union and the Salazar Family Foundation, both long-time supporters of The Jefferson Foundation, underwrote the awards event.

The Value Awards are a long tradition in Jeffco Public Schools. A project of the district's Employee Recognition Committee (representatives from The Jefferson Foundation, the Jefferson County Administrator's Association, the Jefferson County Education Association, the Classified School Employees Association, the Board of Education and the school district's administration), the awards honor the individuals who make Jeffco Public Schools both an excellent school district and an excellent place to work.



Jillian Conrad



Courtney C.



Kaitlyn Smith



Rachael Talley



Cassandra Pearman





The Jefferson Foundation annual report 2010-2011

Revenue Activities of The Jefferson Foundation (July 1, 2010 to June 30, 2011)

Activity: Restricted Donations: \$463,183.28

Restricted donations are gifts to the Foundation designated by the donor for use in a particular program. Examples include donations to one of the Foundation's core programs, such as the Costume Shop, or to one of the donor-advised funds or scholarships managed by the Foundation, such as the Christopher Faughnan Memorial Scholarship.

Activity: Crystal Ball: \$104,923.25

Crystal Ball is an annual gala the Foundation has held every year since 1985. This fundraising event brings in revenue from ticket sales, silent and live auctions, and event sponsorships.

Activity: Corporate Donations: \$47,200.00

Corporate donations are unrestricted gifts, separate from Crystal Ball sponsorships, from local and national businesses and corporations.

Activity: Individual Donations: \$41,724.55

Individual donations are unrestricted gifts that come from individuals, including 100% of the Foundation's Board of Directors. The largest source of individual donations is payroll deduction giving by employees of Jeffco Public Schools, who collectively gave more than \$20,000 in 2010-2011.

Activity: Fundraising Events: \$38,561.37

Fundraising events include events planned by the Foundation, including the annual Love Our Schools Luncheon and the growing Eat for Education, and other events benefiting the Foundation, such as Jeffco Community Night ticket sales with the Colorado Avalanche, the Denver Nuggets, the Colorado Rapids and more.

Activity: Interest Earnings: \$36,063.82

Interest Earnings include both interest income and realized gains on investments. Not reflected in the income total above are unrealized gains on investments. Investment earnings are primarily the realized gains posted to the Foundation's two endowment funds and can not be used immediately to pay for Foundation programs or activities.

Activity: In-Kind Contributions: \$112,480.00

The Jeffco Board of Education has traditionally provided funding for part of the Foundation's operating expenses, and the school district provides office space, including Internet access and IT and custodial support, at no cost to the Foundation. The value of the contribution from the Board of Education is anticipated to decrease by approximately \$65,000 in the 2011-2012 fiscal year and by another \$35,000 in 2012-2013.



The Jefferson Foundation annual report 2010-2011

Thank You!

The Jefferson Foundation is grateful to the following individuals, businesses and partners who made cash donations in 2010-2011.

3 Sons Italian Restaurant
Access Computer Products, Inc.
Adam Mueller
Adams County
Adele and Chuck Willson
Adele Willson
Adwest Consulting, Inc.
AES, Inc
Alan and Barbara Olds
Alan B. and Emily S. Robinson
Aleah Horstman
Alena and Sandra Stimack
Alethea Smock
Alex B. Campbell
Alfred Louis Miller
Alida Carri
Alinco Geoservices, Inc
Alisa Grimes
Allen Taggart
Allison Siegert
Amici's Restaurant
Amy Astle-Raaen
Amy C. Thomas
Amy Dehne
Amy Dougherty
Amy O'Neill
Amy Sherman
Andrea Dirck
Andrew Kerr
Andrew Sharpe
Angela and Jason Astle
Anita Hasenkampf
Anita Sage
Anita Venohr
Ann Davies
Ann DeMers
Ann Meyers
Ann R. Luze
Ann Rutkofsky
Anna Couch
Anne Dee Harrington

Anne Lee
Anne Robinson
Annette Acevedo-Martinez
Annette Johnson
Annette Nellans
Anonymous
Anthony "Anton" Delgado
Antonio and Rosanne Giurardo
Arvada Class of 1980
Audrey and Charles Brown
Audrey Brown
Austin Fehr
Avisa, Inc DBA 240 Union
AXA Equitable Life Insurance Company
B. Hudson Jones
B.T. Goerke
Bandimere Family Foundation
Bank of America Foundation
Bank of Oklahoma
Barb Ohms
Barbara Converse
Barbara Frey
Barbara Hosler
Barbara Johnson
Barbara McEldowney
Barbara Miller
Barbara Nelson
Barbara Rodriguez
Barbra McKee
Bari Abuhadema
BBVA Compass
Bellevue Christian School
Bessie Boyd
Beth Elland
Betty Miller
Betty Wetherbee
Beverly A. Brayden
Beverly Banks
Beverly Fay
Beverly J. Banks

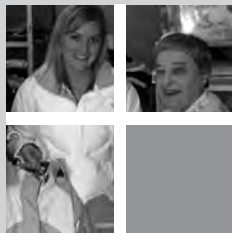
Beverly King
Big Papa's BBQ
Billie and Nicholas Wolfe
Billings Investments
Blacktie Colorado
Boettcher Foundation
Bonnie Bingham
Bonny Wootten
Bosco Constructors Inc
Bottom Line Management, Inc.,
DBA Chad's Grill
Bradley and Kara Skinner
Brady Stroup
Brenda Christy
Brett Carpenter
Brian Ballard
Brian Loney
Bruce and Prudence Green
Bruce and Valeria Lehman
Bryan and Anjanette Benefield
Buddy Douglass
C. Boucher
C.A. Hughes
C.E.C. Laundry Corporation
Caleb Hester
Calvin and Barbara Johnson
Candace Spector
Candise Winder
Caplan & Earnest
Carl and Janice Weger
Carl and Lynn Filoreto
Carma (Colorado) Inc.
Carmah Lawler
Carol and Seth Miller
Carol Delockroy
Carole and Monte House
Carole Havelick
Carolyn Blessinger
Carolyn Bluel
Carolyn Knapp-Nelson
Carolyn Lee

Carolyn Messerly
Carolyn Rupp
Carolyn Schuch
Carrie Jark
Carrie Thompson
Cathy Hurst
Cathy King
Cathy Valentine
Cathy Veges
Cecilia Bretz
Chandler and Kristine Lee
Charlene Holderread
Charles Bruce Levenberg
Charles McNulty
Charles Messmer
Charles Powell
Cheri Carlson
Cheri Kretsch
Cherri Evans
Cheryl Reed
Cherylene and Craig Evans
Chi Colorado Foundation
Chris and Jan Chisholm
Chris and Suzanne Blakeslee
Christian and Kelly Johnson
Christie Davis
Christie Frost
Christina Pannel
Christine Mayer
Christine Yacano
Christopher and Jamie Suchey
Christopher and Kirsten Keating
Christopher and Laura Boggs
Christy's Jewelry and Gifts
Cindy Ayde
Cindy DiPaola
Cindy Stevenson
City of Arvada

City of Golden
City of Lakewood
City of Westminster
City of Wheat Ridge
Claire Meier
Clifton Gunderson LLP
Colleen Leavitt
Colleen Lobberding
Colleen Owens
Colleen Skates
Colorado Avalanche
Colorado Rapids
Committee to Elect Kevin McCasky
Committee to Elect Ted Mink
Community First Foundation
Conchetta Smith
Connie and Larry Wolfe
Connie Jones
Constance and Rodney Smith
Constance Kowal
Constance Wilson
Cozette Monroe
Craig and Adriana Evans
Craig and Claire Pearson
Craig G. and Lois K. Kocian
Curtis and Jane Gilmore
Cindy Heiner Swenson
Cynthia Applehans
Cynthia Barnett
Cynthia Collett
Cynthia Manauah
Cynthia Whitlock
D.D. and A.S. Mabry
D.L. Ellman
Dale Gatz
Dan and Melanie Nuchols
Dan Cohan
Dana Rinderknecht
Daniel and Deann Anderson
Daniel Bigandt
Daniels Fund

Darcy Hutchings
Darren and Tracy Gibbons
Daryl Bostwick
Dave and Marianne Cardinal
Dave Thomas
David and Cindy Bennett
David and Margaret Kastberg
David and Molly Niven
David Cooke
David Goff
David Kollar
David Lindsay
David Schafer
David Weichman
Davis B. Reinhart
Dawn Grooms
Dawn Safranka
Dean Laatt
Deanna Alderman
Debbie Benefield
Debbie Green
Deborah and Robert Stokes
Deborah Carpenter
Deborah Gard
Deborah Hubbard
Deborah Morvay
Deborah Nelson
Deborah Redford
Debra A. Ipson
Debra Hansen
Debra Hickey
Debra Mitchell
Debra Oberbeck
Debra Ward
Dena Zamora
Denise Morris
Dennis and Jeanne Johnson
Dennis and Pamela Polk
Denver Foundation
Denver Nuggets
Derek Hodovance





The Jefferson Foundation annual report 2010-2011

Devin Spindler
Diana Carill
Diane Klinkerfues
Dianna Wedding
Dianne Bennett
Dianne Carpenter
Dianne Sievers
Dolores Thorpe
Don and Anita Shea
Don Cameron
Don Wick
Donald and Marlena Barnwell
Donald Neary
Donia and Patrick Amick
Donna Hanisch
Donna Lynne
Dora and Emanuel Ciner
Foundation Inc.
Doris Stipech
Doris Talasek
Douglas and Joann Phillips
Douglas Hecox
Duane Youse
Dwight Van Ocker
EduCyber, Inc.
Edward and Dolores Baur
Edward and Susan Bowditch
Edward Bentley
Edward L. Jenner
Eileen and Grant Larsen
Eileen Conroy
Elaine Zenger
Elisha Mumma
Elizabeth Bingert
Elizabeth Bradford
Elizabeth Clippinger
Elizabeth Hays
Elizabeth Higgins
Elizabeth Tallman
Elizabeth Ward
Elizabeth Watts
Ellen and Gregory Thompson
Emily Logan
Emily Robinson
Enid Powers
Erik Kerzee
Erin Von Feldt
Evie Hudak
F. and Rita Narcisjan
Faye Koeltzow
FirstBank of Colorado
Fish Feathers LLC
Four Sisters Inc.
Fran von Stein
Frank and Diane Shinnick
Frank Barone
Fred and Karen Pasternack
Freeman Insurance West Inc.

G. and J. Yates
Gail Knowles
Gail Kramer
Gail Marcus
Gail Martin
Gale Schrag
Garney Holding Company
Gary and Sarah Stein
Gary Browning
Gavin and Amy Attwood
George and Adair Kowach
George Cervera
George G. and Leah A. Nixon
George Horning
George Sargent
Georgia Erb Sipes
Gerald Biehl
Gerald Garland
Gerald Griebling
Gerry and Lori Groninger
Gertrude Schneider
GH Phipps
Gibson Arnold & Associates
Ginger Giltner
Glenda Gomez
Glenna Drabek
Gold Crown Foundation
Golden Wealth Solutions
Gordmans, Inc.
Great West Retirement Services
Greg Drake
Greg Wingier
Gregory and Debra Leibold
Gregory Bushey
Gretchen Cerveney
Gretchen Guerra
Guadalupe "Pep" Torres
Gwen Bittner
Hal Straatmann
Harold Jr. and Lillian LaFleur
Harold Urton
Heather Beck
Heidi Fuentes
Heidi Langdon
Helen Gair
Helen Neal
Hereford Percy
Holly Anderson
Hyland Christian School
Innovest Portfolio Solutions
J.R. Tucker
J.S. and V.L. Sewall
Jack and Cherri Evans
Jack and Sandra Kellogg
Jack and Victori "Tori" Merritts
Jack Peterson
Jacob Smith
Jacobs Engineering Foundation

Jakob and Margaret Bakker
James and Janet Koeltzow
James and Mary Everson
James and Minda Donaldson
James and Sue Foley
James Batt
James Cullen
James Ellis
James Everson
James Polsfut
James Willis
Jana Ward
Janace Fischer
Jane and James Greenfield
Jane Gilmore
Jane Goff
Jane Oehm
Jane Patton
Jane Westlye
Janelle Fiallos
Janet Cornell
Janet Ehlen
Janet Fichter
Janet Mackenzie Kittel
Janet Patton
Janet Pease
Janet Shangraw
Janet Walker-Yates
Janet West
Janice Bale
Janice Holmes
Jason Firestone
JAX Foundation Trust
Jean Marie Urano
Jean Meyer
Jean Scharfenberg
Jean Simmons
Jean Wendelin
Jeanette Palizzi
Jeanette Scully
Jeanine Spellman
Jeanmarie Bizarro
Jeanne Oliver
Jeannette Nelson
Jeannine Humble
Jeff Johnson
Jeff Wilkins
Jeffco Community Partnership
Jeffco Public Schools
Jefferson County Administrators
Association
Jefferson County Education
Association
Jefferson County PTA
Jefferson County Retired School
Employees Association
Jeffrey Johnson
Jeffrey Lamontagne

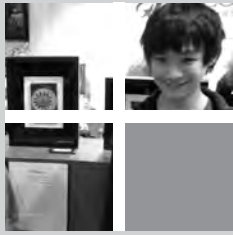
Jennifer and Cory Christensen
Jennifer Cunningham
Jennifer Eleniewski
Jennifer Friednash
Jennifer Garland
Jennifer Keller
Jennifer Lufman
Jennifer Lusk
Jennifer O'Dorisio
Jennifer Pennell
Jennifer Steele
Jennifer Vagher
Jerry and Carol Dexter
Jerry Chapman
Jessica Koehler
Jill and Kenneth Fellman
Jill Colby
Jill Fellman
Jill Long
Jim and Betty Astle
Joan Campbell
Joan E. Smith
Joan Laubhan
Joanna Clapham
Joanna Wilson
Jodie Sundberg
Jody and Timothy McNerney
Joe Fretz
Joe Raymond Lingold
Joe Sawaged
Joe Shaw
John and Janice Renicker
John and Judy McEvert
John and Katherine Dockerty
John and Nancy West
John C. and Kaye Becker
John Dahl
John Jr. and Deborah Backus
John Litz
John Marion
John Nichols
John Rybon
John Seman
John Verna
John Willy
John Zabawa
Jones Family Foundation
Joshua Stransky
Joyce Brown
Joyce Cooke
Joyce Sperry
Joyce Sutton
Judi Sedustine
Judith Beck
Judith Butler
Judith Eidson
Judith Grotke
Judith Parmenter-Manzanares

Judith Parson
Judith Winning
Judy Bauernschmidt
Judy Johnson
Judy MacLean
Judy Vassar
Juli Nieto
Julia and James Blackford
Julie and Richard Lerudis
Julie Bade
Julie Milligan
Justin Rimbort
JVA Consulting
Kaiser Permanente of Colorado
Karen and Latholah S. Chumbley
Karen Barnett-Brunson
Karen Braketa
Karen Cravens
Karen Garrett
Karen Greenhalgh
Karen Greer
Karen King
Karen Montz-Duran
Karen Oldani
Karen Pramenko
Karie Yenter
Karina Meidinger
Karla Bolton
Karon Badalamenti
Kathi Neitzel-Hewes
Kathleen and Wayne Kreiger
Kathleen Doherty-Reetz
Kathleen Donnelly
Kathleen McCubbin
Kathleen Remington
Kathryn Ashenfelter
Kathryn Frank
Kathryn Glass
Kathryn Harbaugh
Kathryne and Richard Richey
Kathy and Eric Kufeldt
Kathy Chandler
Kathy Weiss
Katie and Joseph Kramer
Katie Tiernan
Katy Irvin
Kay and Randy Morrow
Kay Coughlin
Keary Sullivan
Keiran Purcell
Keith and Lisa McLaughlin
Kelly Baillie
Kelly McGagan
Kelsey Leffingwell
Ken and Chandra Kirwin
Kenneth Sawyer
Kenneth Stevens
Kent Landmark

Keri Abbott and Chris Scheer
Kevin Hecht
Kim Mears
Kimberly Evezich
Kimberly Senger
Kirk and Sharity McAdams
Koger Propst
Kristen Anderson
Kristin Gillmore
Kristin and Tim Wimbish
Kroenke Sports Enterprises
Krsitine Kraft
Kryssia Gallagher
Kurt and Jennifer Hammond
Kutak Rock
L & S Enterprises, Inc. DBA Peppers
La Veta Trezise
Lakewood High School
Lance J. and Lynn A. Johnson
Lara Dunn
Lara Hooper
Larene Wolfe
Larry Hauserman
Larry Ratliff
Latin American Educational
Foundation
Laura Boggs
Laurie Lawless
Laurie Skifstrom
Lavonne Angus
LeaAnne and John Slizeski
Leah and Joel Varnell
Leah Perkins
Leigh Ann Kudloff
Leigh Hiester
Leisa Austin
Leo Lohman
Lesley Dahlkemper
Leslie and Kay Nelson
Leslie Strate
Lester and Kimberly Willson
Liang Philomena
Lin Browning
Linda and Eric Nehls
Linda Boettcher
Linda Chang
Linda Cox
Linda Griffin
Linda McClelland
Linda Mitts
Linda Patridge
Linda Redden
Linda Rice
Linda Saunders
Lindsay Bazz
Lisa and Patrick McStravick
Lisa Antweiler
Lisa Buescher



The Jefferson Foundation annual report 2010-2011



Lisa Donahue-White
Lisa Hediger
Lisa K. Anderson
Lisa Nolan
Lisa Schrag
Lisa Walz
Liz Dietrich
Liz Rowland
Lola's Sugar Rush
Lori Hoffner
Lori Saueracker
Lori Yokomizo
Lorie Gillis
Lorissa Manfra
Lorraine Anderson
Lorraine Bandimere
Lorraine Mirabito
Lorrie Kamy
Luann Schwartz
Lynn Acker
Lynn and Francoise Yehle
Lynn Huizing
Lynn Setzer
Lynn Simpson
Lynne Brohl
Lynne Quaglieri
M.E. Davies
Malcom Aylett
Marcia Adams
Marcia Hughes
Marcia Jasek
Mardi Rumin
Margaret Abramshe
Margaret Kaschak
Marge and Warren Bohn
Margene Stroup
Marguerite McCombie
Marie Lindvall
Marilyn Chappell
Marilyn Kotich
Marilyn Saltzman
Marilyn T. Blomberg
Marisa Marinac
Mark and Beverly Conklin
Mark Flora
Mark O'Connor
Mark Vrtikapa
Marth Beth Bazzanella
Martha Herron
Marvin Almqvist
Marvin and Marcia Edwards
Mary and Alan Ragins
Mary and Robert Tiernan
Mary and Roger Ballenger
Mary Ballenger
Mary Bartow Bridges Jensen
Mary C. Berg
Mary Cahill-Sena

Mary Clouse
Mary Ellen Schrecengost
Mary Forester
Mary K. Wick
Mary Levandoski
Mary Linton
Mary Metropulos
Mary Murray
Mary Sileo
Mary Taylor
Mary White
Marymae H. Seaman
Matthew and Ashley Goldstein
Matthew and Lynnae Ann Flora
Maura and Thomas Faughnan
Maureen and Rudolph Stines
Maureen Harrison
Max Bryant
Max John Choboian
MBK Deli
Medical Business Services, LLC
Megan Baiardo
Megara Pullen
Melinda Delmonico
Melinda Reed
Melisande Guiff
Merle and Molly Waterman
Michael and Jeanne Rivera
Michael Mattingly
Michael McMenamy
Michael P. Sipes
Michael Watt
Michele Bishop
Michele Haney
Michele Patterson
Michelle Schiffbauer
Michelle Stockland
Michelle Vacchiarelli
Michelle Winzent
Microsoft Matching Gifts Program
Mika Melvin
Miller Heiman, Inc.
Mina Koeltzow
Molly Law
Mona Sandoval
Murrell Public Relations
Mutual of Omaha Insurance
Company
Nadine Hill
Nancy and Bob Hoffmaster
Nancy Davis
Nancy Graeve
Nancy Hardesty
Nancy McCannless
Nancy McPherson
Nancy Westerhoff
Norma Anderson
Olga-Jean Shelton

Optimist Club of Wheat Ridge
Our Lady of Fatima School
Overland Conveyor Company
Pam Farris
Pam Reitan
Pam Schmidt
Pamela Anderson
Pamela Flemming
Pamela Guthrie
Pamela Kelsall
Pamela Lorenz
Pamela McClelland
Pamela Surratt
Panorama Research & Education
Foundation
Patricia Connell
Patricia Hirschboeck
Patricia L. Davis
Patricia Lease
Patricia MacLennan
Patricia Navarez
Patricia Stromberg
Patrick and Doreen McHugh
Patrick and Marcella Donovan
Patti Stewart
Paul and Kristen Niedermuller
Paul Bailey
Paul Boerger
Paul K. and Shirley M. Haverty
Paula Glenn
Paula Noonan
Paula Wiens
Peggy Taylor
Penny Tompkins
Performance Now Theatre
Company
Personal Benefit Services
Peter Jonnard
Peter Pittman
Peter Weir
Phyllis Bubeck
Purvis Jewelers
Quality Insurance Solutions, LLC
R. Brooke Jackson
R. Mark McGoff
Raeann Hern
Raven's
Ray J. May & Associates, LTD
Ray May
Rebecca Deignan
Rebecca Ketchum
Rebecca Winning
Red Rocks Community College
Foundation
Regina Fetterolf
Regina School Division
Rene Smith
Renee Sanders

Rhoda A. Hill
Rhonda Valdez
Richard and Georgia Smith
Richard Benson
Richard Billings
Richard Williams
Richelieu Hastings
Rita Throckmorton
Rob Hoover
Robbin Wood
Robert and Judith Dickinson
Robert and Kathleen Zachman
Robert and Kristina Gurdikian
Robert and Laura Barton
Robert B. and Anita J. Davis
Robert Bishop
Robert Crowley
Robert Dyer
Robert Ennis
Robert Hachmeister
Robert Lopez
Robert Veges
Robin Dodich
Robin Kupernik
Robin Techmanski
Rod Tarullo
Roger and Renee Kirlin
Roger Ballenger
Roger Pool
Ron and Lisa Hopp
Ron Marquez
Ronald Benson
Ronald Livingston
Rosemary Peterson
Rothgerber Johnson & Lyons LLP
Roya Smith
Ruth Arnold
Ruth Saout
Sally Mills
Sandra Austin
Sandra Gallegos
Sandra Meyer
Sandra Stimack
Sandra Williams
Sandy Larson Hahn
Sara and Dan Fellman
Sara Gagliardi
Sarah Baker
Sarah Knowlton
Sarah Pooler
Schomp Automotive
Scott A. Meiklejohn
Scott Cheney
Scott Peth
Scott Storey
Shana Johnson
Shannon May
Shareen Connors

Sharon Coffman
Sharon Lydon
Sharon Rhodes
Sharon Usher
Sharyl and Dana Chavez
Shawn Harris
Shelley and Larry Shea
Shelley Cook
Shelley Dressler
Shelly Brask
Sheralyn Heffner
Sherri L. Richardson
Sherrie Bunting
Sheryl Larsen
ShiningEyes Archer
Shirley Fischer
Shirley Jerome
SMJ Partners, LLC DBA Sloan's
St. Andrew Presbyterian Church
St. Anthony's Health Foundation
Stacey Aranda
Stacy Meiser
Stacy Priola
Stephanie Acosta
Stephanie Longsdorf
Stephanie Stengaard
Stephen and Maryanne "Moe"
Keller
Stephen Farmer
Stephen Hoppin
Stephen Soich
Steven Bell
Steven Hitchens
Steven J. Schreivogel
Stifel, Nicolaus & Company, Inc.
Success Foundation -
Greeley-Evans
Sue Anne Berger
Sue Mills
Sue Windels, Sue
Susan Bergkamp
Susan Fischer
Susan Gill
Susan Gobbo
Susan Marinelli
Susan Pitts
Susan Schafer
Susan Vitale
Susanne Mogan
Suzan Wood
Suzanne McClung
Suzanne Ogborn
Suzanne Scohy
Sylvia Widdenson
Table Mountain Inn
Tahmina Ahmed
Tama Wood
Tara Masonier

Ted Carpenter
Teletech Community Foundation
Teri Eichman
Terri Taylor
Terry L. Gallant
Thank Em Promotions
The Estate of Alvin J. Meiklejohn Jr.
The Mary R. Vodneck Trust
The West Chamber
Theresa Lee
Thomas and Diane Mulvany
Thomas Mesaros
Tim Scaturro
Timothy Carlson
Toby Moser Insurance Agency, Inc.
Todd Engels
Tom and Joan Faughnan
Tom Hoby
Tonia Kreiger
Tori Whitney
Tracy Newman
Tracy Casvina
Tracy Dundon
Tracy Haschker
Tracy Langworthy
Tricia Conklin
Troy Braley
Twila Redeker
US Bank
Valerie Hightower
Valerie Montano
Vera Schmalenberger
Vicki Hillberry
Vicki Wolf
Victoria Chung
Virginia B. Cellars
Virginia Grimes
W.L. Peebles
Walter E. and Nancy R. Zavitz
Wanda Bedinghaus
Wanda Rohr
Warren "Hunts" and Cheri Kretsch
Warren and Mary Blair
Warren Blair
Wells Fargo
Wendy Woodland
Westerra Credit Union
Will Morton
William and Jamie Johnson
William and Mary Ross
William and Wendy Speckman
Young At Heart Club
Yvette and Matthew Roberts
Zach McGuire
Zachary Stroker





The Jefferson Foundation annual report 2010-2011

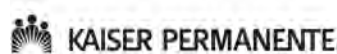
Corporate Donors to The Jefferson Foundation (July 1, 2010 to June 30, 2011)

The Jefferson Foundation extends sincere gratitude to the following businesses who made cash donations to the Foundation and its programs in 2010-2011. All efforts have been made to include every gift made in the fiscal year; the Foundation apologizes if a gift has been mistakenly left off this list.

3 Sons Italian Restaurant
Access Computer Products, Inc.
AdWest Consulting
Alinco Geoservices, Inc.
Amici's Restaurant
Avisa, Inc DBA 240 Union
AXA Equitable Life Insurance Company
Bank of America
BBVA Compass Bank
Big Papa's BBQ
Billings Investments
Blacktie, LLC
Bosco Constructors, Inc.
Bottom Line Management, DBA Chad's Grill
Caplan and Earnest, LLC
Carma
CEC Laundry Corporation
Children's Dentistry
Christy's Jewelry and Gifts
Clifton Gunderson, LLP
Colorado State Bank and Trust (Bank of Oklahoma)
EduCyber, Inc.
FirstBank of Colorado
Fish Feathers, LLC
Four Sisters, Inc.
Freeman Insurance West
Garney Holding Company
GH Phipps
Gibson Arnold and Associates
Golden Welath Solutions
Gordman's, Inc.
Great West Retirement Services
Innovest Portfolio Solutions

Jacobs Engineering
Jeffco Community Partnership
Jeffco Coupons
JVA Consulting, LLC
Kaiser Permanente of Colorado
Kroenke Sports Enterprises/The Pepsi Center
Kutak Rock
L&S Enterprises, Inc. DBA Peppers
Lola's Sugar Rush
MBK Deli
Medical Business Services, LLC
Microsoft Matching Gifts Program
Mutual of Omaha Bank—Golden
Mutual of Omaha Insurance Co.
Murrell Public Relations
Overland Conveyor Company
Panorama Orthopedic and Spine Center
Personal Benefit Services
Purvis Jewelers
Quality Insurance Solutions, LLC
Raven's
Ray J. May and Associates, LTD
Rothgerber, Johnson and Lyons, LLP
Schomp Automotive
SMJ Partners, LL DBA Sloan's
Stifel, Nicolaus and Co., Inc.
Table Mountain Inn
Teletech
Thank Em Promotions
Toby Moser Insurance Agency
US Bank
Wells Fargo
Westerra Credit Union

Very special thanks to the following major corporate donors, whose consistent support and generous donations underwrite many of the Foundation's activities in Jeffco Public Schools.



Billings Investments
BBVA Compass Bank
Caplan and Earnest, LLC
Freeman Insurance West

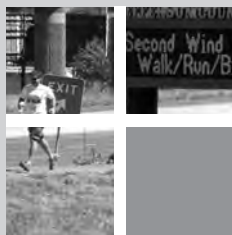
Rothgerber, Johnson and
Lyons, LLP
Schomp Automotive

Support The Jefferson Foundation

The Jefferson Foundation fundraises year-round to support our programs and activities. Donations to the Foundation may be tax-deductible and are always appreciated. To make a gift to the Foundation, you can:

- visit us online at www.jeffersonfoundation.org to make a secure and easy debit or credit card contribution through our partnership with GivingFirst and the Community First Foundation, or to set up payroll giving if you are an employee of Jeffco Public Schools
- mail cash or checks, made payable to The Jefferson Foundation, to 809 Quail St., Bldg #1, Lakewood, CO 80215

- include us in your estate or financial planning—be sure to let us know!
- donate children's clothing for the Serving Kids program or fun gifts for the Crystal Ball Silent Auction by dropping them off at our offices at 809 Quail St., Bldg #1 in Lakewood
- become a Foundation volunteer! Volunteers are needed to help manage our office, operate our core programs and plan and staff events and fundraisers. If you have a special interest in our work and want to dedicate part of your time to helping us grow, please let us know by contacting Foundation Executive Director Katie Tiernan at 303.982.2261.



The Jefferson Foundation annual report 2010-2011

Balance Statement: June 30, 2011*

CURRENT ASSETS

Checking/Savings	194,879.68
Other Current Assets	65,510.05
Total Current Assets	260,389.73
Fixed Assets	
Accumulated Depreciation	-32,825.51
Furniture & Equipment	32,826.46
Total Fixed Assets	.95

Other Assets

Christopher Faughnan Memorial Scholarship	42,054.58
Betty and Joe Wetherbee Art and Music Fund	159,751.31
Operating Endowment **	310,815.04
Total Other Assets	512,620.93

TOTAL ASSETS **773,011.61**

LIABILITIES & EQUITY

Liabilities	
Current Liabilities	32,166.56
Total Liabilities	32,166.56
Equity	
Beginning Net Assets	489,588.53
Opening Balance Equity	154,000.000
Retained Earnings	10,194.30
Net Income	87,062.22
Total Equity	740,845.05

TOTAL LIABILITIES & EQUITY **773,011.61****

* Unaudited financial statements; subject to revision.

** With matching grants from the Community First Foundation, total Operating Endowment is valued at \$510,815.04.

Legacy Partners Giving Society and Planned Giving

Planned giving, or including The Jefferson Foundation as a beneficiary of personal assets in estate planning, is one of the easiest ways for donors who care about public education in Jefferson County to leave a lasting legacy. According to Giving USA 2011, a report on American philanthropy researched by the University of Indiana's Center on Philanthropy, approximately 8% of the \$290.89 billion donated to charitable organizations in 2010 came from bequests. Bequests actually accounted for \$7.5 billion more than did corporate donations in 2010.

Planned giving can be as simple as naming The Jefferson Foundation in a will or as the beneficiary of a life insurance policy or pretax retirement plan, for example. Other gifts can include gifts of stock, real estate, and other assets. The benefits of making a charitable gift part of estate planning go beyond benefiting a nonprofit organization, because some charitable gifts may actually decrease taxes.

Planned gifts can be endowed to benefit a particular area of interest or can be unrestricted for the Foundation to use to meet emerging

needs. A gift to the Foundation does not have to be large to make a difference. Even modest donations can have a big impact over time.

The Jefferson Foundation would like to say thank you to the following individuals, who have arranged to make a planned gift. As members of the Foundation's Legacy Partners Giving Society, they are providing forever funding to the Foundation and its programs in Jeffco Public Schools.

- Sue Anne Berger (The Sue Anne Berger Scholarship Fund and the Sue Anne Berger Math and Science Fund)
- Barbara Hosler and Jim Tully (Undesignated)
- The Estate of Alvin J. Meiklejohn, Jr. (Restricted gift to benefit Meiklejohn Elementary School)
- Gail Pratt (Undesignated)
- Betty Wetherbee (The Betty and Joe Wetherbee Art and Music Fund)

If you have included The Jefferson Foundation in your estate plans, please let us know by contacting Foundation Executive Director Katie Tiernan at 303.982.2261.



